



Easy installation



Compact

The engine is cooled by a coolant loop in a closed circuit. The system consists of a heat exchanger, inside which the heat exchange between coolant and sea water takes place. Two separate pumps provide for the circulation of coolant and seawater. Air flows ensure effective cooling of the alternator.

The excellent accessibility makes maintenance operations easier, even with the generator installed in confined environments.

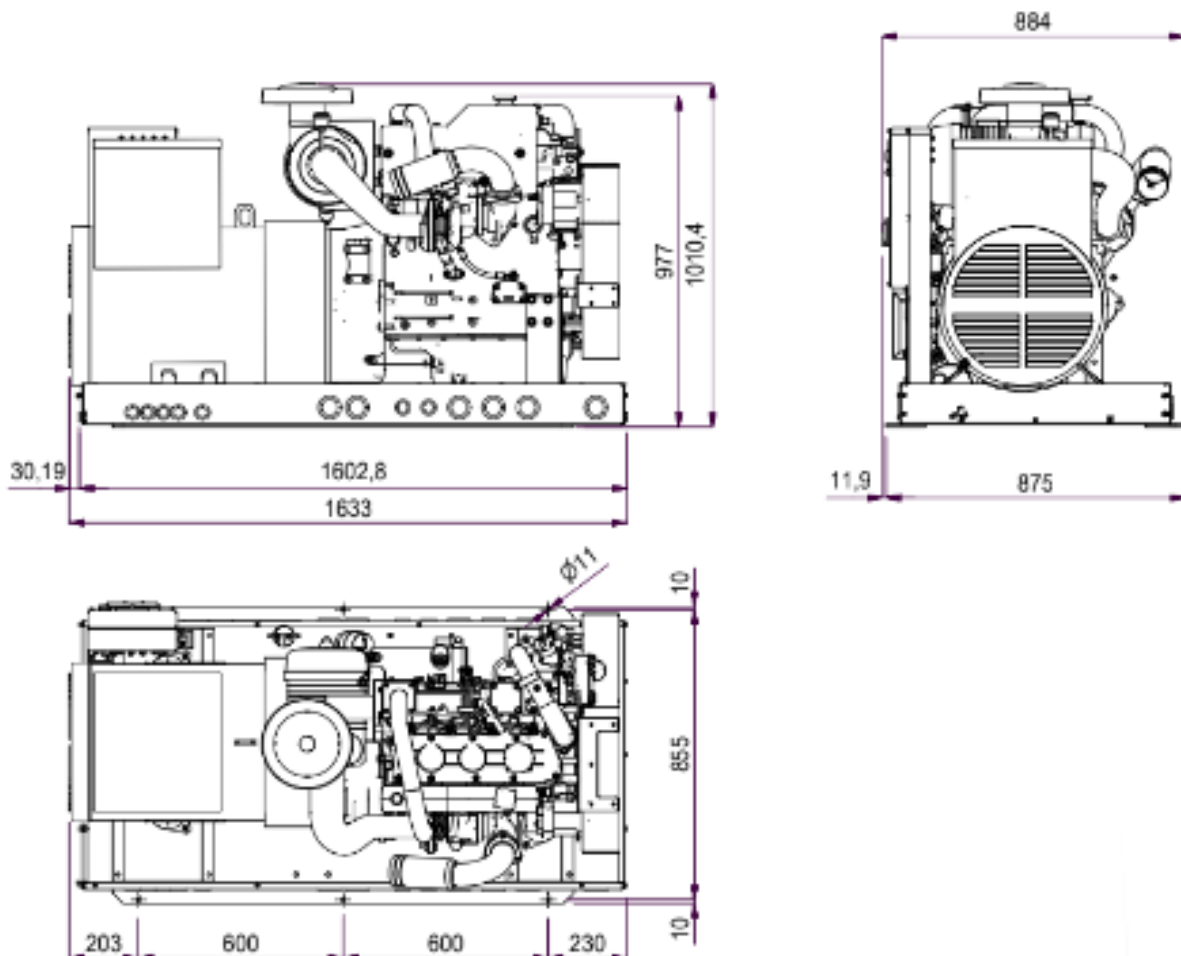


Control panel

- _ CBU EVO IL4 device controls and drives the genset. The large display and control pushbuttons allow easy use and monitoring:
 - Manual start
 - Voltage Vac
 - Frequency Hz
 - Hour meter
 - Genset battery voltage
 - Oil low pressure alarm
 - Engine preheating
 - Engine high temperature alarm
 - Alternator battery charger failure alarm
 - Protection alarm for frequency and rpm
 - Alarm history
 - Maintenance warnings
 - General alarm outlet
 - RUN outlet
 - Ready outlet
 - Programmable AUX outlet
- _ Emergency stop button
- _ Magneto-thermal protection

Engine

- _ Easy maintenance access to the feeding and lubrication systems, the sea water pump and the air filter
- _ Double vibration dumping system
- _ Oil drain pump



50 Hz

60 Hz

AC alternator -	Synchronous, 4 poles, with AVR	
Cooling	Air	
Voltage	400 V	
Frequency	50 Hz	60 Hz
Amps	127.2 A	144.5 A
Max power	88 kVA	100 kVA
Continuous power	80 kVA	91 kVA
Power Factor	cos ϕ 0.8	
Insulating class	H	
Voltage stability	$\pm 2\%$	
Frequency stability	$\pm 5\%$	

The power is referred to an atmospheric pressure of 100 kPa, a humidity percentage of 30% and an ambient temperature of 25°C.

Model	Perkins 1104A-44TG1	
Type	Diesel	
Cylinder block material	nr 4	
Cylinders	Cast iron	
Bore	105 mm - 4.14 in	
Stroke	127 mm - 5 in	
Displacement	4400 cc - 268.51 CID	
Power	96.4 hp - 70.91 kWm	109.9 hp - 80.84 kWm
RPM	1500	1800
Compression ratio	18.3:1	
Engine head material	Direct injection	
Combustion system	Cast iron	
Speed governor	Electronic	
Lubrication system	Forced	
Oil sump capacity with filter	6.5 l - 1.83 gl	
Engine stop system	Solenoid valve	
Fuel pump	Electric	
Max. fuel pump head	700 mm - 27.5 in	
Fuel consumption	18.7 l/h - 4.94 gl/h	22.3 l/h - 5.89 gl/h
Air intake		
Starting battery	80 Ah - 12 V	
Battery charger	40 Ah - 12 V	
Starter motor	12 kW - 12 V	
Max. inclination	25°	
Water pump flow	86 l/min - 22.71 gl/min	
Sea water inlet pipe \varnothing	25 mm - 1"	
Exhaust pipe \varnothing	102 mm - 4"	
Input/Output fuel pipe \varnothing	8 mm - 5/16"	

Dimensions (L x W x H)

1594 x 893 x 1005 mm - 62.8 x 35.2 x 39.6 in

Weight

950 Kg - 2095 lb



Accessory

Code

Accessories on request

• Filtering kit: sea water inlet, sea water strainer, taps, fittings D.16 - ref.4	04349
• Mase exhaust kit: sea water lock, silencer, outlet D.50	04658
• Mase super silenced exhaust kit & exhaust gas separator D.50	010078
• Siphon break D.16 - ref.3	04290
• Mase Muffler D.50	70795
• Silencer Mase D.50	71809
• Mase water/gas exhaust separator D.50	04488
• Vetus LP50 muffler	71148
• Vetus silencer MP50	71751
• Silencer Vetus c.71751 with soundproofing sponge	039866
• Vetus Separator LGS5038	71717
• Centek muffler 2"	71155
• Centek 2" water/gas exhaust separator	71156
• Remote START/STOP panel with 20m cable for Comap IL4 - ref.1	037561
• Comap IL4 remote start panel with 20m cable - ref.2	039607
• Cruise Kit	913948

